

CENTURION I

HIGH-VOLUME

Single Housing Assembly



PETROLEUM

FILTER TECHNOLOGY FOR PETROLEUM PRODUCTS

MODEL: CENTURION I

Application

- Designed for high-volume service station applications, commercial fueling centers, marine fueling centers, agricultural fueling, and truck stop fueling centers
- Filter housings and replaceable elements are compatible with gasoline, diesel, methanol and ethanol blends up to 10%, biodiesel up to B20, and ultra-low sulfur diesel (ULSD)
- Filter housings may be used in hydraulic oil applications

Design Features

- 30 gpm (113 lpm) maximum flow
- Standard 1" NPT inlet/outlet flow area
- Elements are available in 10 and 30 micron paper for particulate removal
- Elements are available in 10 and 30 micron Hydrosorb® media for water detection and particulate removal
- Elements are available in 2 micron Cellulose/Microglass blend for longer life of particulate removal
- Equipped with a draincock for easy drainage of captured contaminants

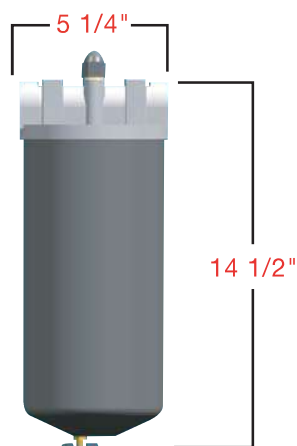


Centurion I w/Adaptor

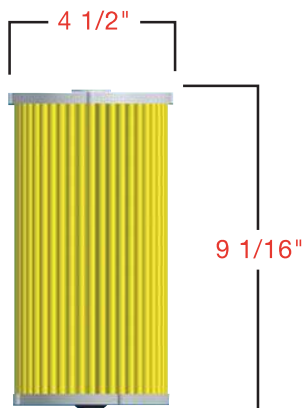
Benefits

- Demonstrated extended equipment life
- Assures delivery of quality fuel
- Cleaner change-out with draincock design
- Eco-friendly reusable housing

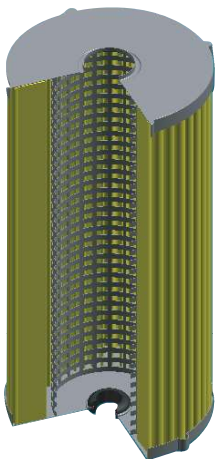
Centurion I Dimensional Information



Centurion I w/Adaptor



Filter Element



Section View of Element

Ordering Information

Part No.	Model	Description
40001	Single Adaptor	Housing Kit Consisting of Adaptor, Housing, Washer, Acorn Nut, and Draincock. Element Not Included. (1"NPT Inlet/Outlet)

Centurion I Elements

Part No.	Model No.	Description
30065	E02	Element for Particulate Removal. High-Performance 2 Micron Microglass/Cellulose Media Blend.
30002	E10	Element for Particulate Removal. 10 Micron Cellulose Media.
30004	E30	Element for Particulate Removal. 30 Micron Cellulose Media.
30033	EHS-10	Element for Water Detection and Particulate Removal. 10 Micron Hydrosorb® Media.
30036	EHS-30	Element for Water Detection and Particulate Removal. 30 Micron Hydrosorb® Media.
30195	E-10M	Element for Particulate Removal. 10 Micron High Performance Microglass Media.

NOTE: 1. Element includes gaskets, washer, and filter element.
2. Filters are not to be used with aviation applications.

Adaptor Part No.	Description	Dimensions
90004	 Material: Aluminum adaptor Used on: Centurion I Inlet/Outlet ports: 1" NPT	

CENTURION II HIGH-VOLUME Double Housing Assembly



PETROLEUM

FILTER TECHNOLOGY FOR PETROLEUM PRODUCTS

MODELS: CENTURION II

Application

- Designed for high-volume service station applications, commercial fueling centers, marine fueling centers, agricultural fueling, and truck stop fueling centers
- Filter housings and replaceable elements are compatible with gasoline, diesel and ultra-low sulfur diesel (ULSD), but may NOT be used with methanol, methanol blended fuels, or oils when coalescing element used
- Filter housings may not be used in hydraulic oil applications
- Staged filtration applications

Design Features

- 30 gpm (113 lpm) maximum flow
- Standard 1" NPT inlet/outlet flow area
- Elements are available in 10 and 30 micron paper for particulate removal
- Elements are available in 10 and 30 micron Hydrosorb® media for water detection and particulate removal
- Elements are available in 2 micron Cellulose/Microglass blend for longer life
- Equipped with a draincock

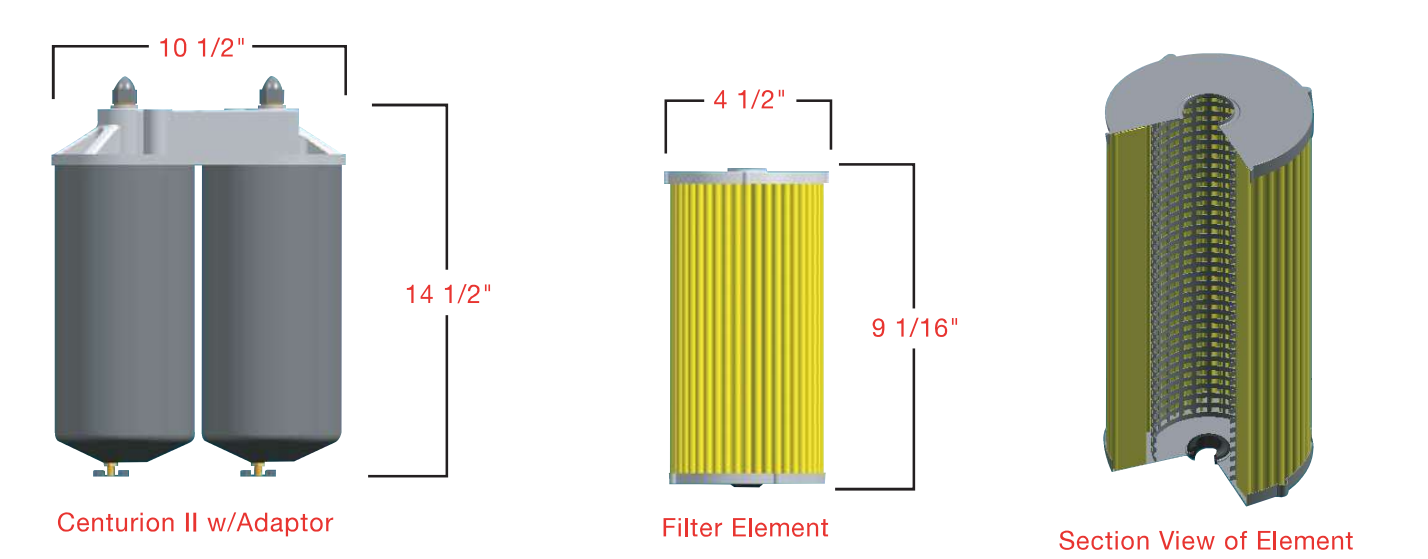


Centurion II w/Adaptor

Benefits

- Demonstrated extended equipment life
- Assures delivery of quality fuel
- Cleaner change-out with draincock design

Centurion II Dimensional Information



Ordering Information

Part No.	Model	Description
40008	Double Adaptor	Housing Kit Consisting of Adaptor, Housing, Washer, Acorn Nut, and Draincock. Element Not Included. (1"NPT Inlet/Outlet)

Centurion II Elements

Part No.	Model No.	Description
30065	E02	Element for Particulate Removal. High-Performance 2 Micron Microglass/Cellulose Media Blend.
30002	E10	Element for Particulate Removal. 10 Micron Cellulose Media.
30004	E30	Element for Particulate Removal. 30 Micron Cellulose Media.
30033	EHS-10	Element for Water Detection and Particulate Removal. 10 Micron Hydrosorb® Media.
30036	EHS-30	Element for Water Detection and Particulate Removal. 30 Micron Hydrosorb® Media.
30005	Stage I	* Centurion II Coalescing Element

NOTE: 1. * It is recommended that the Centurion II Coalescing Element be used in **Stage I** followed by a standard Centurion element in **Stage II**.
2. Element includes gasket, washer, and filter element.
3. Filters are not to be used with aviation applications.
4. Centurion II requires two elements.

Adaptor Part No.	Description	Dimensions
90013	Material: Aluminum adaptor Used on: Centurion II Inlet/Outlet ports: 1" NPT	

CENTURION III HIGH-VOLUME

Dual Housing Parallel Flow



PETROLEUM

FILTER TECHNOLOGY FOR PETROLEUM PRODUCTS

MODEL: CENTURION III

Application

- Designed for high-volume service station applications, commercial fueling centers, marine fueling centers, agricultural fueling, and truck stop fueling centers
- Filter housings and replaceable elements are compatible with gasoline, diesel, methanol and ethanol blends up to 10%, biodiesel up to B20, and ultra-low sulfur diesel (ULSD)
- Filter housings may be used in hydraulic oil applications
- Parallel flow applications

Design Features

- 60 gpm (227 lpm) maximum flow
- Standard 1 1/2" NPT inlet/outlet flow
- Elements are available in 10 and 30 micron paper for particulate removal
- Elements are available in 10 and 30 micron Hydrosorb® media for water detection and particulate removal
- Elements are available in 2 micron Cellulose/Microglass blend for longer life
- Equipped with a draincock

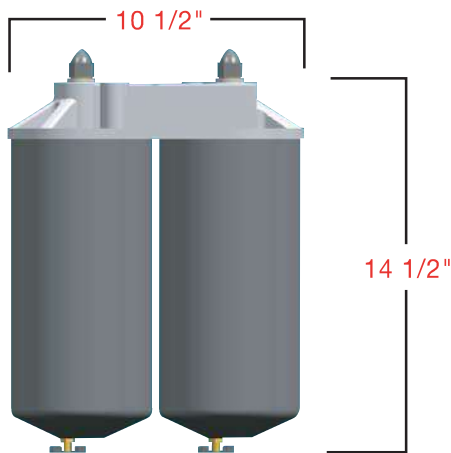


Centurion III w/Adaptor

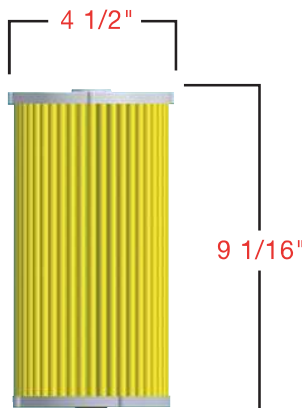
Benefits

- Demonstrated extended equipment life
- Assures delivery of quality fuel
- Cleaner change-out with draincock design
- Eco-friendly reusable housing

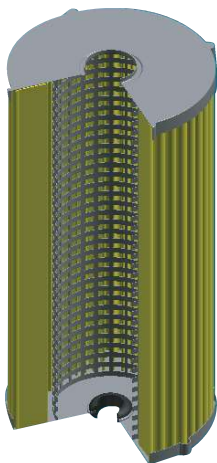
Centurion III Dimensional Information



Centurion III w/Adaptor



Filter Element



Section View of Element


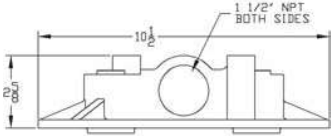
Ordering Information

Part No.	Model	Description
40013	Dual Adaptor	Housing Kit Consisting of Adaptor, Housing, Washer, Acorn Nut, and Drainscock. Element Not Included. (1 1/2" NPT Inlet/Outlet)

Centurion III Elements

Part No.	Model No.	Description
30065	E02	Element for Particulate Removal. High Performance 2 Micron Microglass/Cellulose Media Blend.
30002	E10	Element for Particulate Removal. 10 Micron Cellulose Media.
30004	E30	Element for Particulate Removal. 30 Micron Cellulose Media.
30033	EHS-10	Element for Water Detection and Particulate Removal. 10 Micron Hydrosorb® Media.
30036	EHS-30	Element for Water Detection and Particulate Removal. 30 Micron Hydrosorb® Media.
30195	E-10M	Element for Particulate Removal. 10 Micron High Performance Microglass Media.

- NOTE: 1. Element includes gaskets, washer, and filter element.
2. Filters are not to be used with aviation applications.
3. Centurion III requires two elements.

Adaptor Part No.	Description	Dimensions
90014	 Material: Aluminum adaptor Used on: Centurion III Inlet/Outlet ports: 1 1/2" NPT	

CENTURION IV HIGH-VOLUME

Three Element Parallel Flow



PETROLEUM

FILTER TECHNOLOGY FOR PETROLEUM PRODUCTS

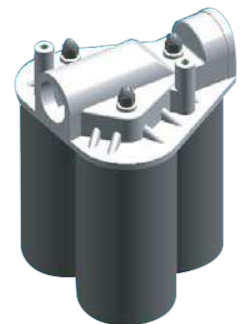
MODEL: CENTURION IV

Application

- Designed for high-volume service station applications, commercial fueling centers, marine fueling centers, agricultural fueling, and truck stop fueling centers
- Filter housings and replaceable elements are compatible with gasoline, diesel, methanol and ethanol blends up to 10%, biodiesel up to B20, and ultra-low sulfur diesel (ULSD)
- Filter housings may be used in hydraulic oil applications
- Triple parallel flow applications

Design Features

- 90 gpm (340 lpm) maximum flow
- Standard 2" NPT inlet/outlet flow
- Elements are available in 10 and 30 micron paper for particulate removal
- Elements are available in 10 and 30 micron Hydrosorb® media for water detection and particulate removal
- Elements are available in 2 micron Cellulose/Microglass blend for longer life
- Equipped with a draincock for easy drainage of captured contaminants

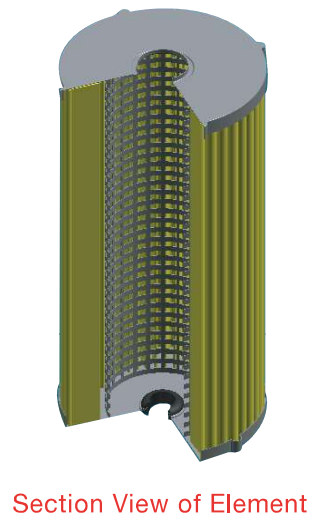
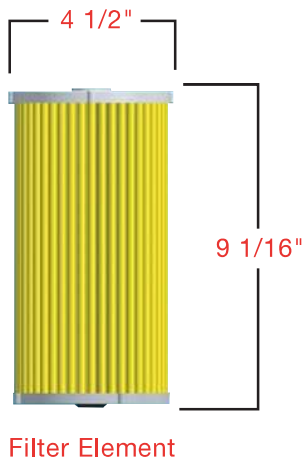
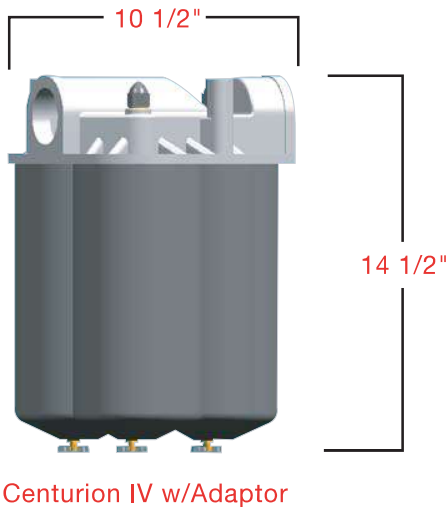


Centurion IV w/Adaptor

Benefits

- 90 gpm flow capacity
- Demonstrated extended equipment life
- Numerous element options
- Assures delivery of quality fuels

Centurion IV Dimensional Information



Ordering Information

Part No.	Model	Description
40020	Triple Adaptor	Housing Kit Consisting of Adaptor, Housing, Washer, Acorn Nut, and Draincock. Element Not Included. (2" NPT Inlet/Outlet)

Centurion IV Elements

Part No.	Model No.	Description
30065	E02	Element for Particulate Removal. High Performance 2 Micron Microglass/Cellulose Media Blend.
30002	E10	Element for Particulate Removal. 10 Micron Cellulose Media.
30004	E30	Element for Particulate Removal. 30 Micron Cellulose Media.
30033	EHS-10	Element for Water Detection and Particulate Removal. 10 Micron Hydrosorb® Media.
30036	EHS-30	Element for Water Detection and Particulate Removal. 30 Micron Hydrosorb® Media.
30195	E-10M	Element for Particulate Removal. 10 Micron High Performance Microglass Media.

- NOTE: 1. Element includes gaskets, washer, and filter element.
2. Consult Cim-Tek® Filtration for oil, methanol, and ethanol compatability.
3. Filters are not to be used with aviation applications.
4. Centurion IV requires three elements.

Adaptor Part No.	Description	Dimensions
90015	Material: Aluminum adaptor Used on: Centurion IV Inlet/Outlet ports: 1" NPT	